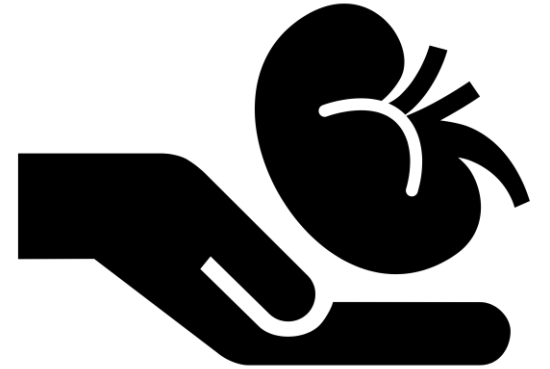
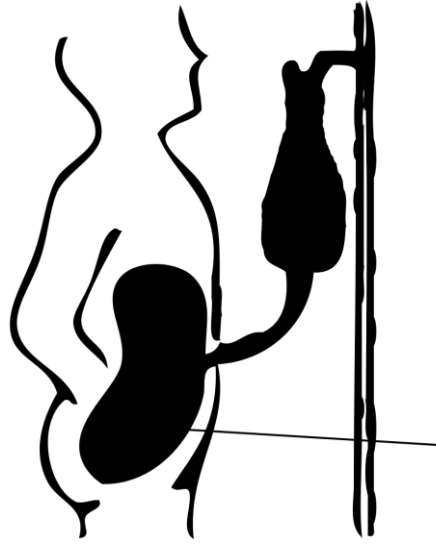
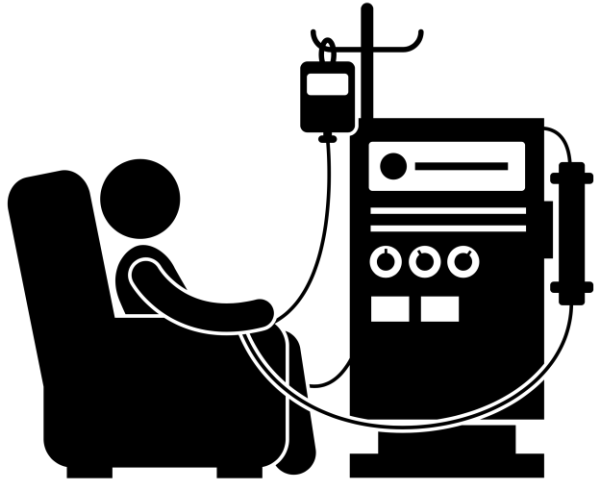
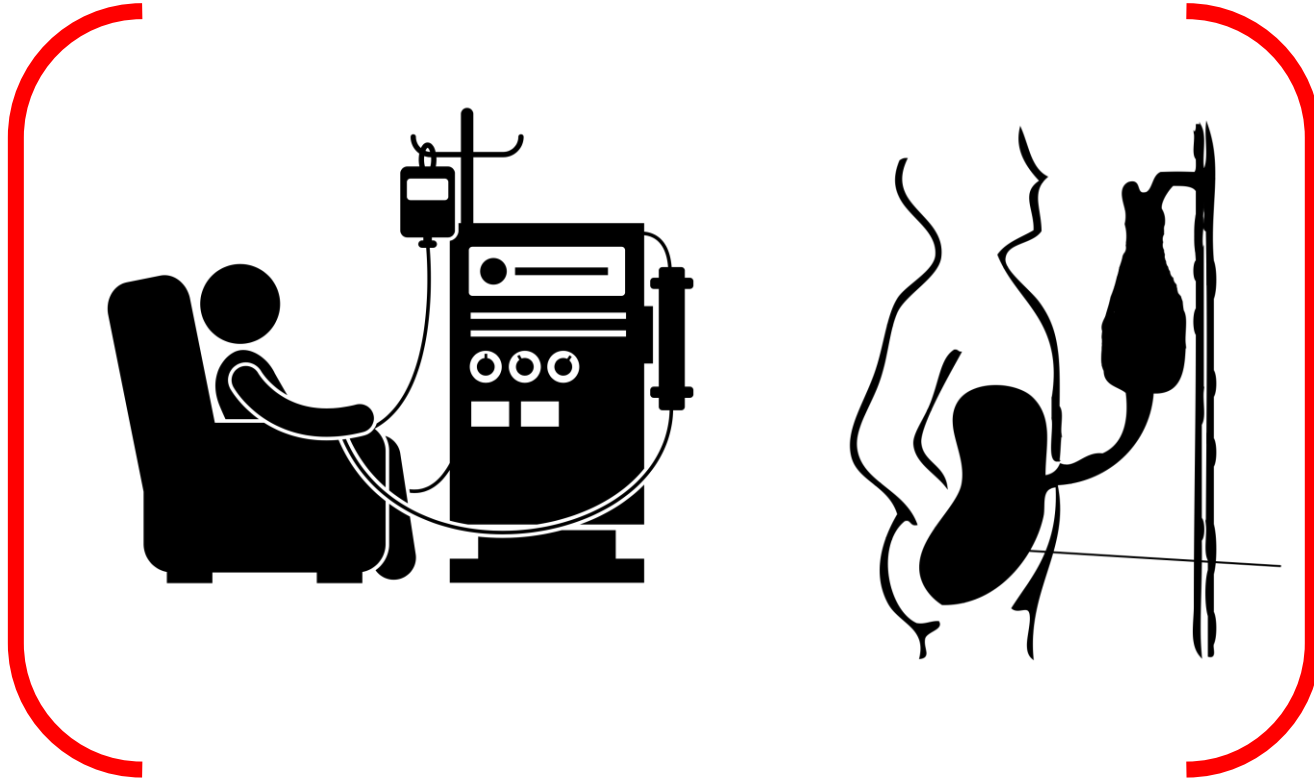


# Dialyse aan huis: medische, maatschappelijke en economische gevolgen

Floris Vanommeslaeghe

[Avondcolloquium Alumni Geneesheren Universiteit Gent](#)





4707

Fig 2. Outcome domains and metrics used to represent adequacy of dialysis in randomized controlled trials.



Steyaert S, Holvoet E, Nagler E, Malfait S, Van Biesen W (2019) Reporting of “dialysis adequacy” as an outcome in randomised trials conducted in adults on haemodialysis. PLOS ONE 14(2): e0207045. <https://doi.org/10.1371/journal.pone.0207045>  
<https://journals.plos.org/plosone/article?id=10.1371/journal.pone.0207045>

[Groep nierpatiënten ziet levenskwaliteit fors stijgen dankzij nierdialyse thuis | VRT NWS: nieuws](#)

School halen /

Nierpatiënten gaan doorgaans naar een ziekenhuis voor behandeling

Moe / uitgewrongen vod /

Winst in welbevinden / bloedresultaten / overleving

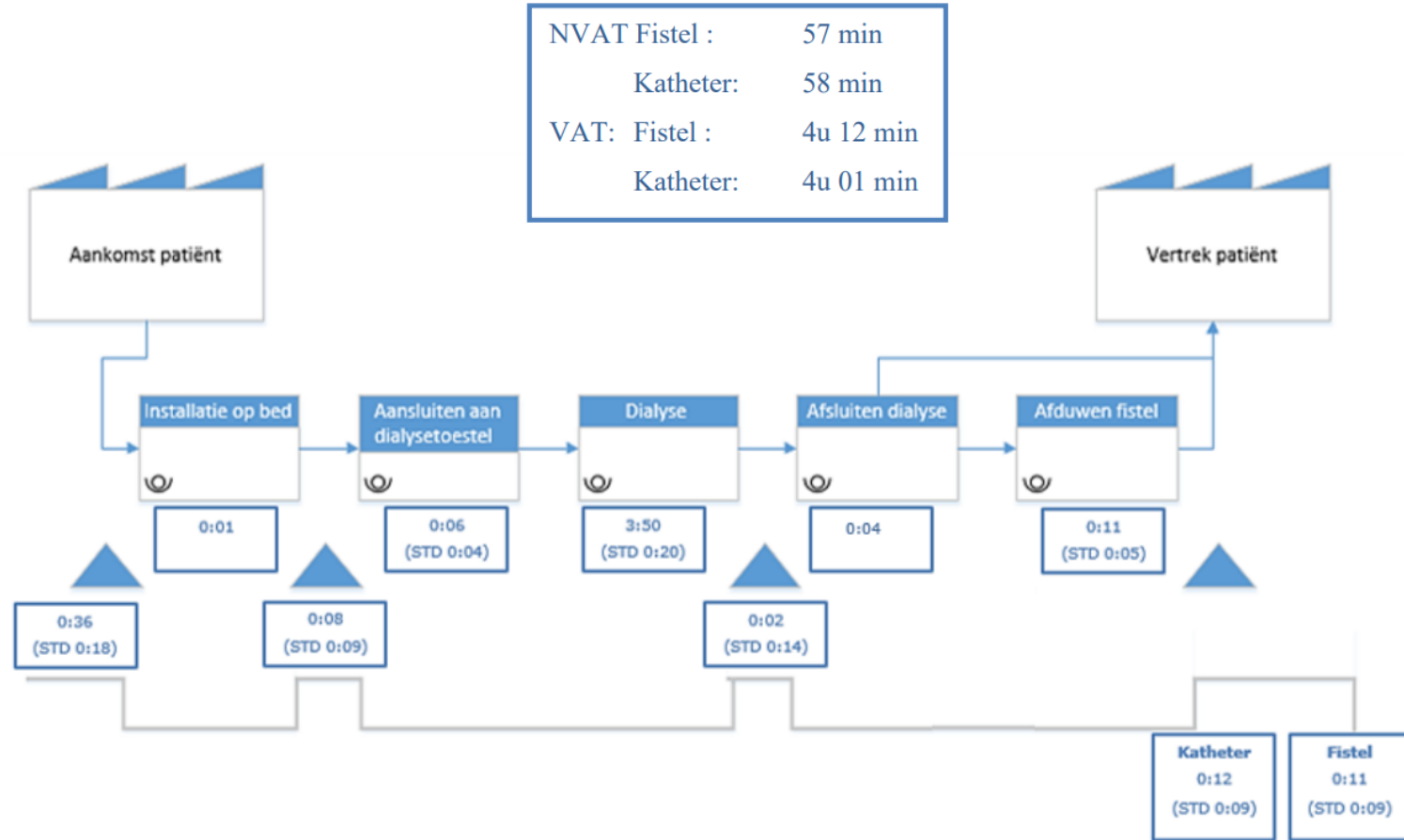
Goedkoper

Ruimte nodig

**School halen /**

**Nierpatiënten gaan doorgaans naar een ziekenhuis voor behandeling**

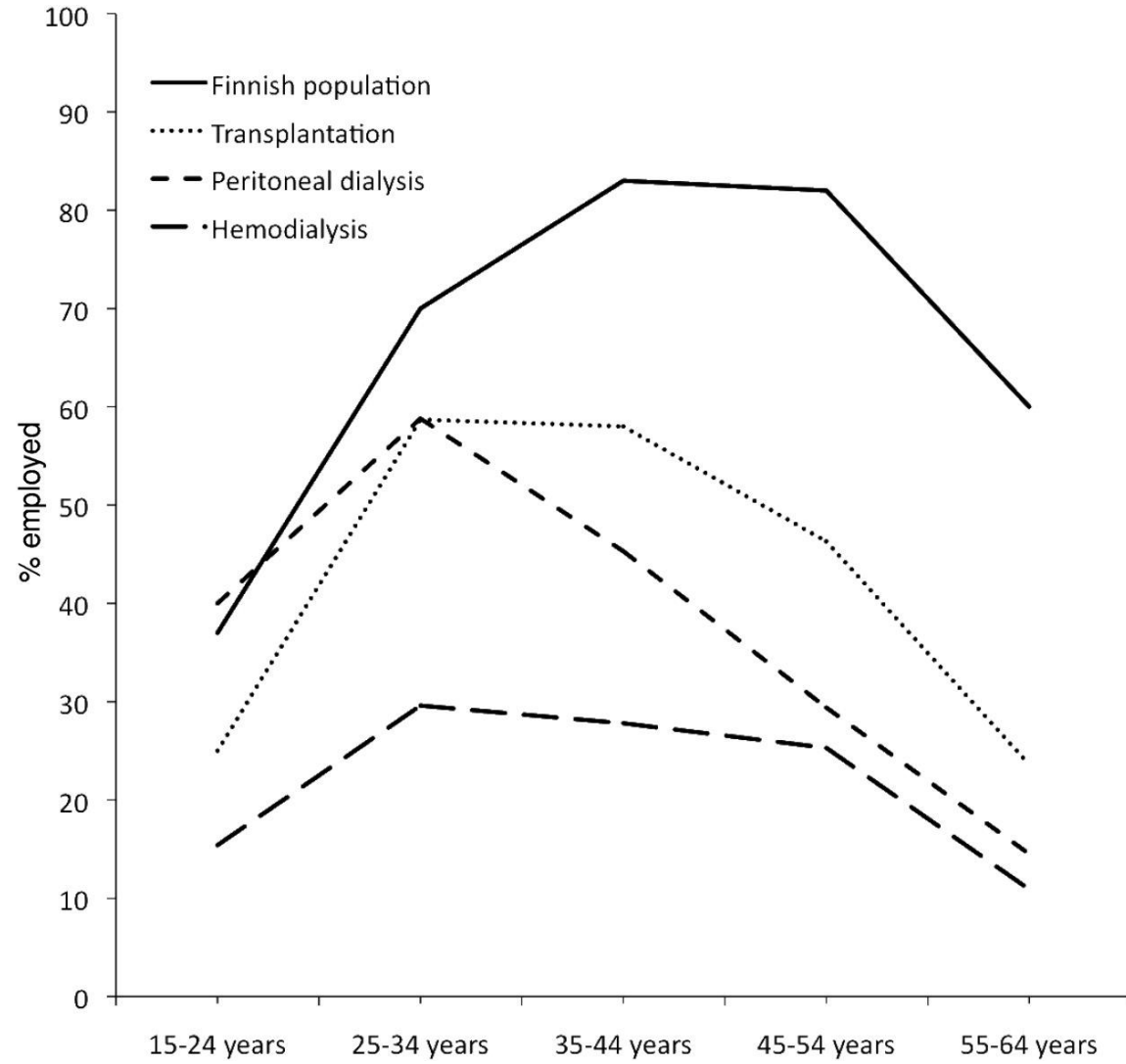




Rokegem, Kelly, and Paul Gemmel.

*Workflow Management Op De Dialyseafdeling Van Een Algemeen Ziekenhuis. 2015.*







“Nierpatiënten **gingen** doorgaans **niet** naar een ziekenhuis voor behandeling”



59 % thuishemodialyse



32 % thuishemodialyse



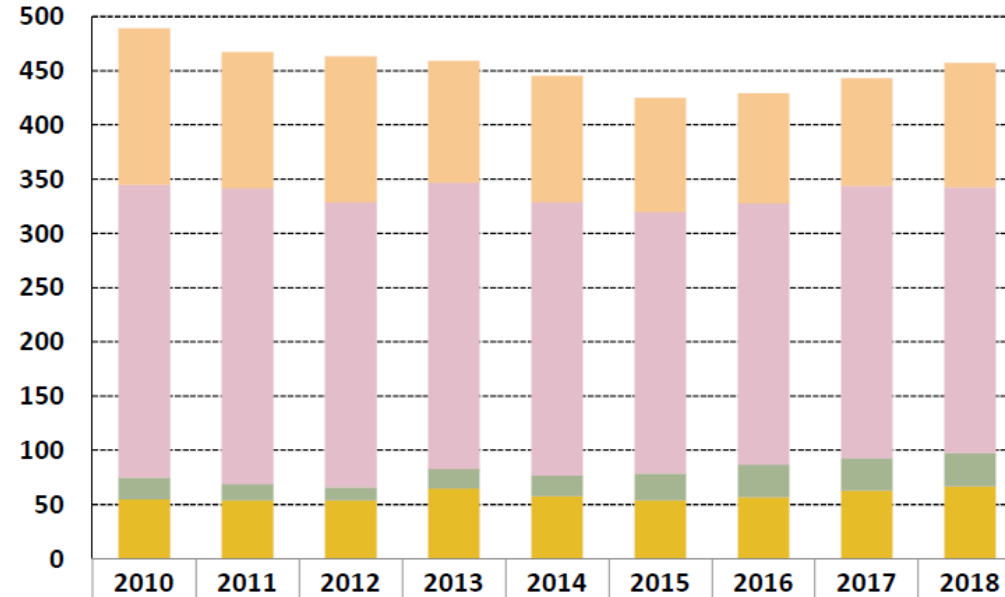
“Nierpatiënten **gaan** doorgaans naar een ziekenhuis voor behandeling”



7,6 % peritoneaal dialyse  
0,7 % thuishemodialyse



26 % peritoneaal dialyse  
7% thuishemodialyse



	2010	2011	2012	2013	2014	2015	2016	2017	2018
CAPD	144	125	134	112	116	105	101	99	114
APD	270	273	263	264	252	241	241	251	245
Thuis HD - dag of nacht	20	15	12	18	19	25	30	30	31
Centrum HD - nacht	55	54	54	65	58	54	57	63	67

'Low cost' dialyse (exclusief Low Care HD – dag)

Totaal aantal patiënten met nierfunctie-  
vervangende therapie op 1 januari

4228 4344 4403 4450 4511 4566 4600 4626 4707



**Part de la dialyse à domicile  
parmi l'ensemble des patients en dialyse  
au 31 décembre 2017**

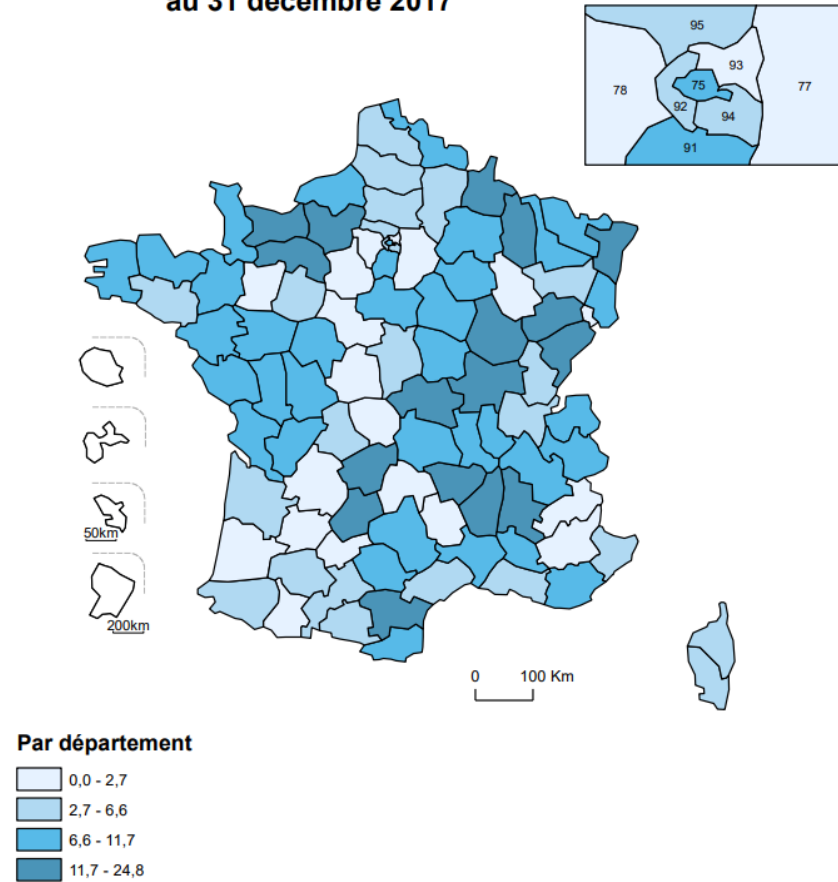
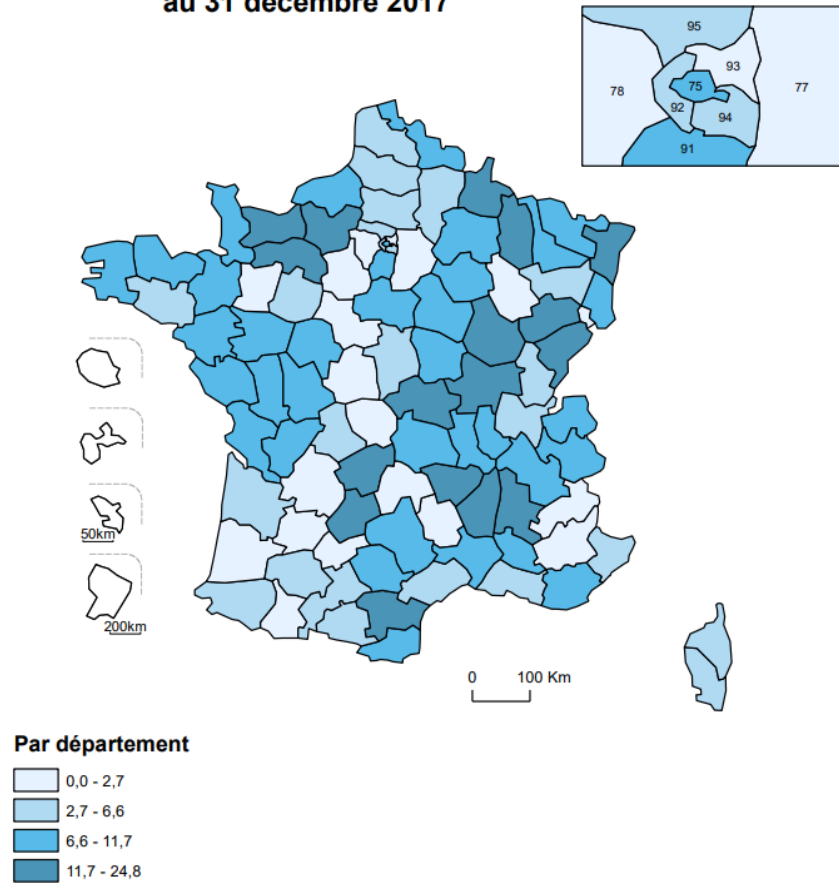


Figure 4-2. Part de la dialyse à domicile, par département  
Distribution of home dialysis, by area

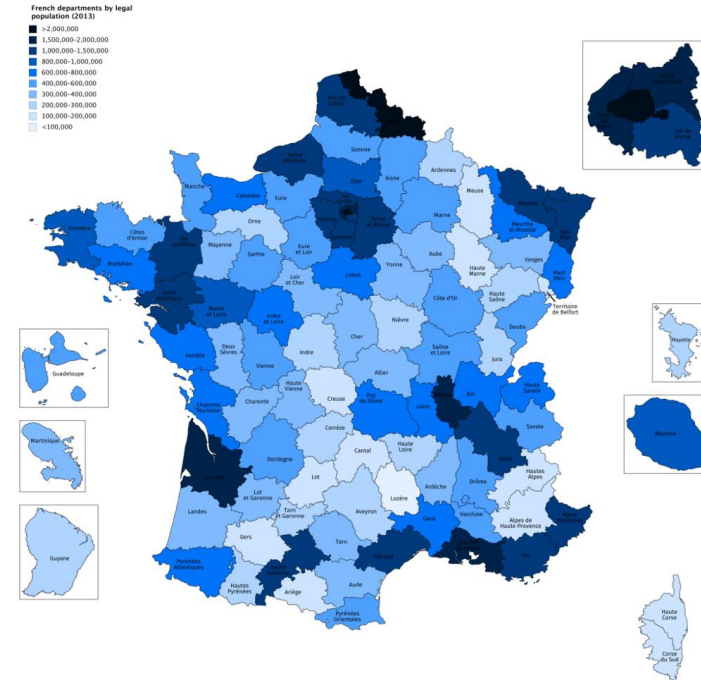


### Part de la dialyse à domicile parmi l'ensemble des patients en dialyse au 31 décembre 2017



Source: Agence de la biomédecine

Figure 4-2. Part de la dialyse à domicile, par département  
Distribution of home dialysis, by area

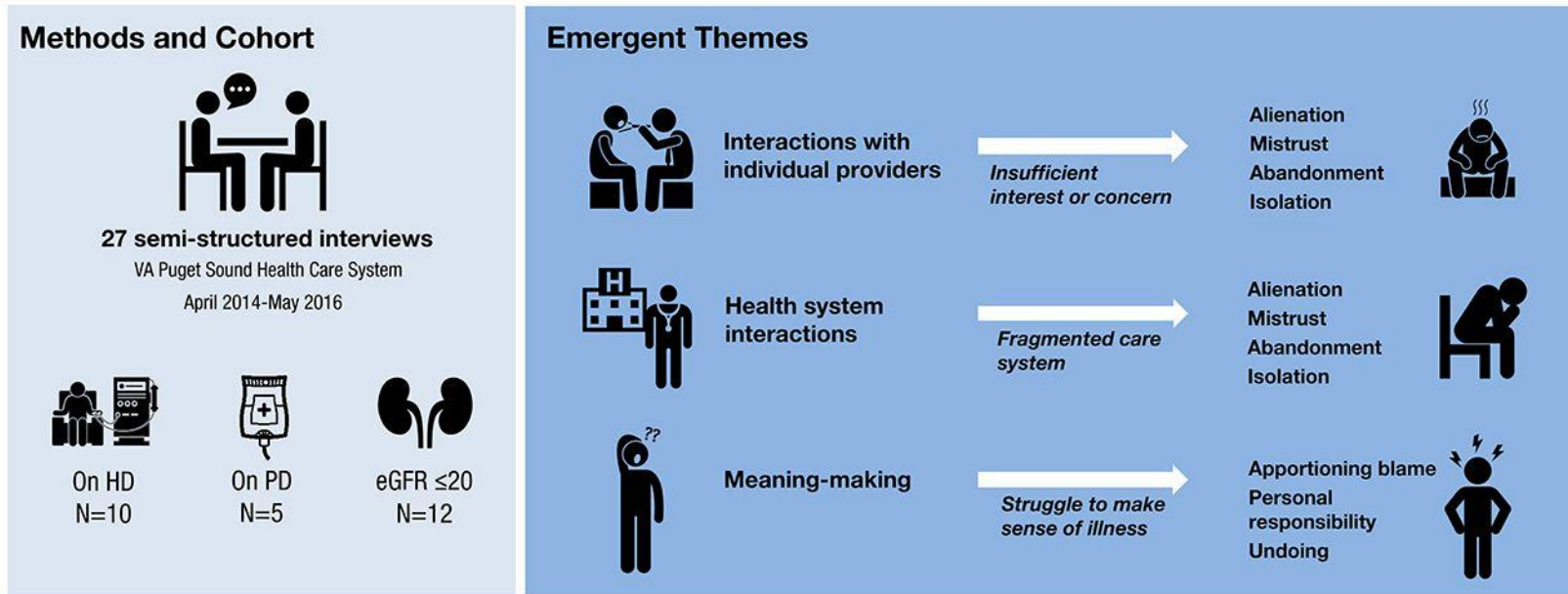


**Moe / uitgewrongen vod /  
Winst in welbevinden / bloedresultaten / overleving**





# What is the emotional impact of illness and care on patients with advanced kidney disease?



**Conclusions** Illness and interactions with providers and the health system can take a large emotional toll on patients. A deeper understanding of patients' emotional experiences may offer opportunities to improve care.

Ann O'Hare, Claire Richards, Jackie Szarka, Lynne McFarland, Whitney Showalter, Elizabeth Vig, Rebecca Sudore, Susan Crowley, Ranak Trivedi, and Janelle Taylor. **Emotional Impact of Illness and Care on Patients with Advanced Kidney Disease.** doi: 10.2215/CJN.14261217

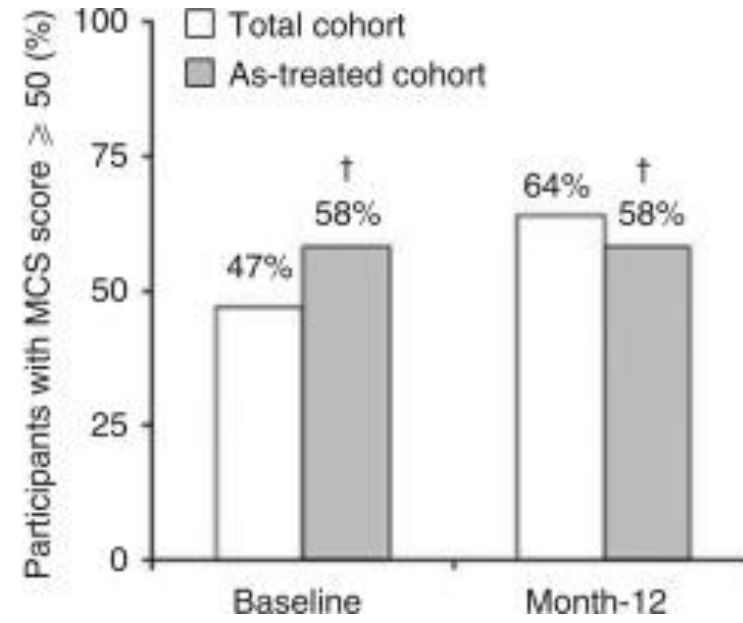
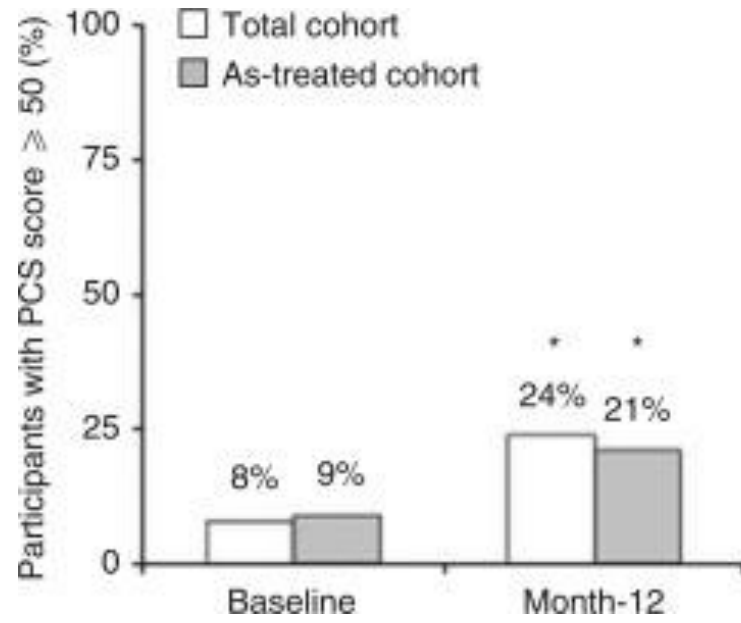
Ann M. O'Hare et al. CJASN 2018;13:1022-1029





**Table 2 Evidence summary – the relationship between greater patient activation and behaviours, health care utilisation and clinical outcomes**

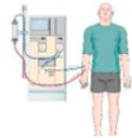
Disease-specific self-management	Use of health care services	Preventive behaviours	Healthy behaviours	Clinical outcomes
Adherence to medications*	Higher adherence to post-surgical physical therapy	Cancer screenings	Not smoking	Lower A1c
Monitoring biometrics	Fewer hospitalisations	Immunisations	Healthy diet	Lower blood pressure
Regular chronic care monitoring (eg, eye and foot exams, blood pressure checks)	Fewer re-admissions	Regular check-ups	Regular exercise	Lower cholesterol





## Higher Physical Activity is Associated with Less Fatigue and Insomnia among Patients on Hemodialysis

### Patient Selection



- Cross-sectional design
- 48 adult HD patients
- Ambulatory
- In-center HD
- HD Vintage >90 days

### Methods



#### Physical Activity

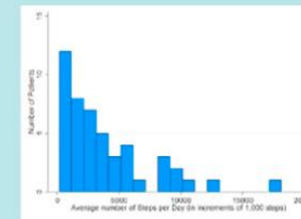
- Mean daily step counts (pedometer for 7 days)

#### Questionnaires:

- Dialysis Symptoms Index (DSI)
- KDQOL Vitality Scale
- CES-Depression

### Results

Median daily step count = 2631

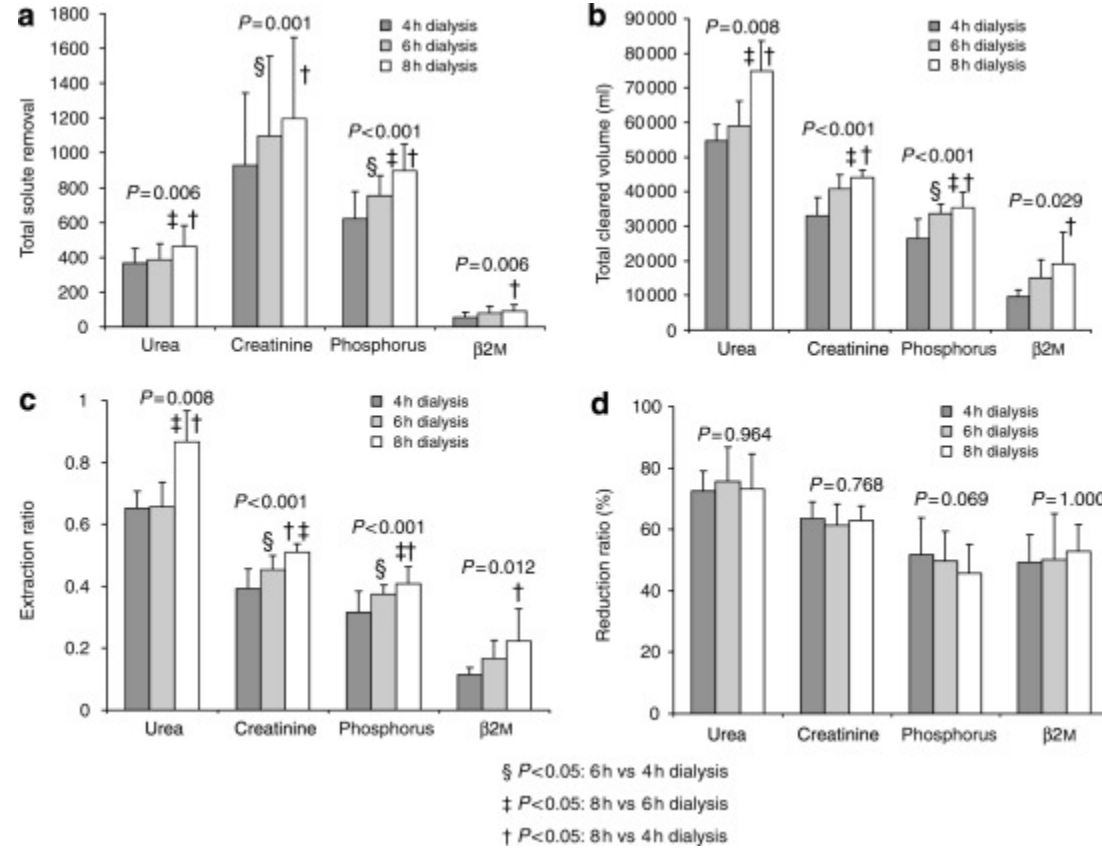


Each 1,000 additional steps per day associated with:

- ↓ 0.2 points for fatigue severity on DSI ( $p = 0.04$ )
- ↓ 0.1 points for insomnia severity on DSI ( $p = 0.05$ )
- ↑ 2.36 points on KDQOL Vitality Scale ( $p = 0.04$ )

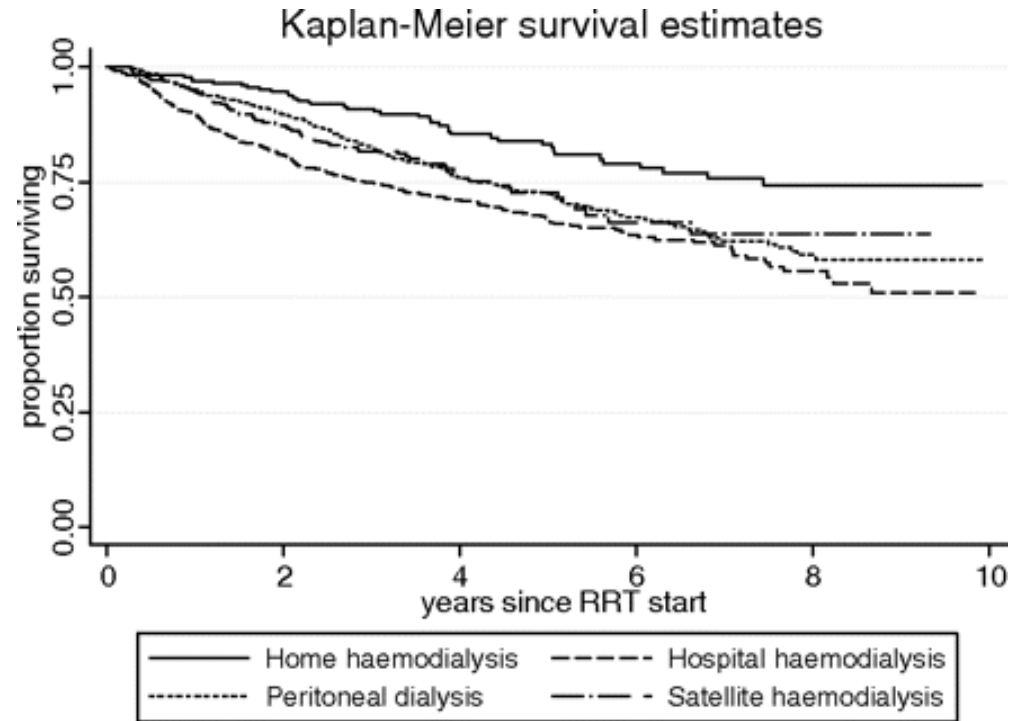
### CONCLUSION:

Interventions to increase physical activity should be considered alongside current strategies as a possible approach to managing fatigue and insomnia.





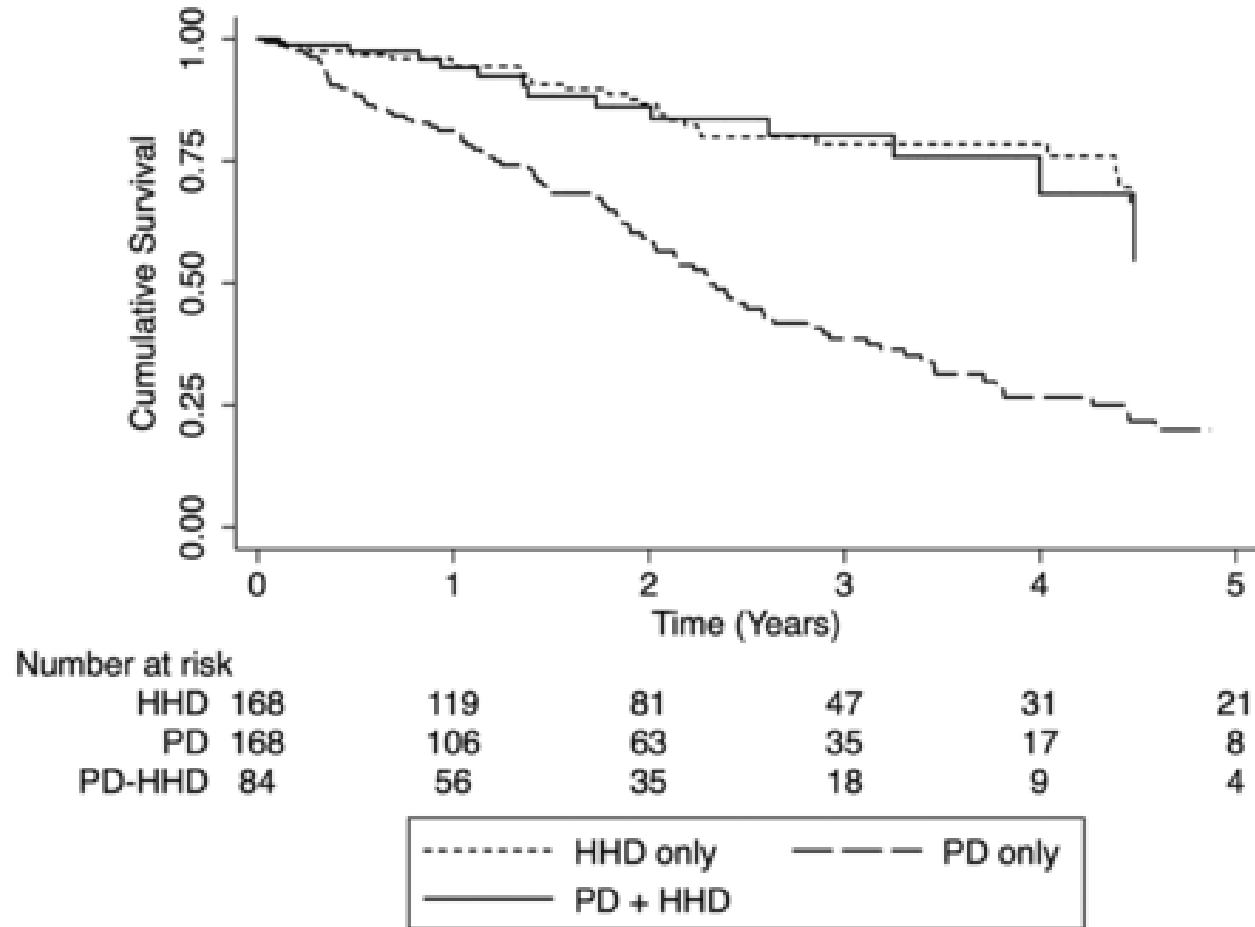
**Fig. 4** Crude patient survival after starting renal replacement therapy, by dialysis modality. Home haemodialysis ...

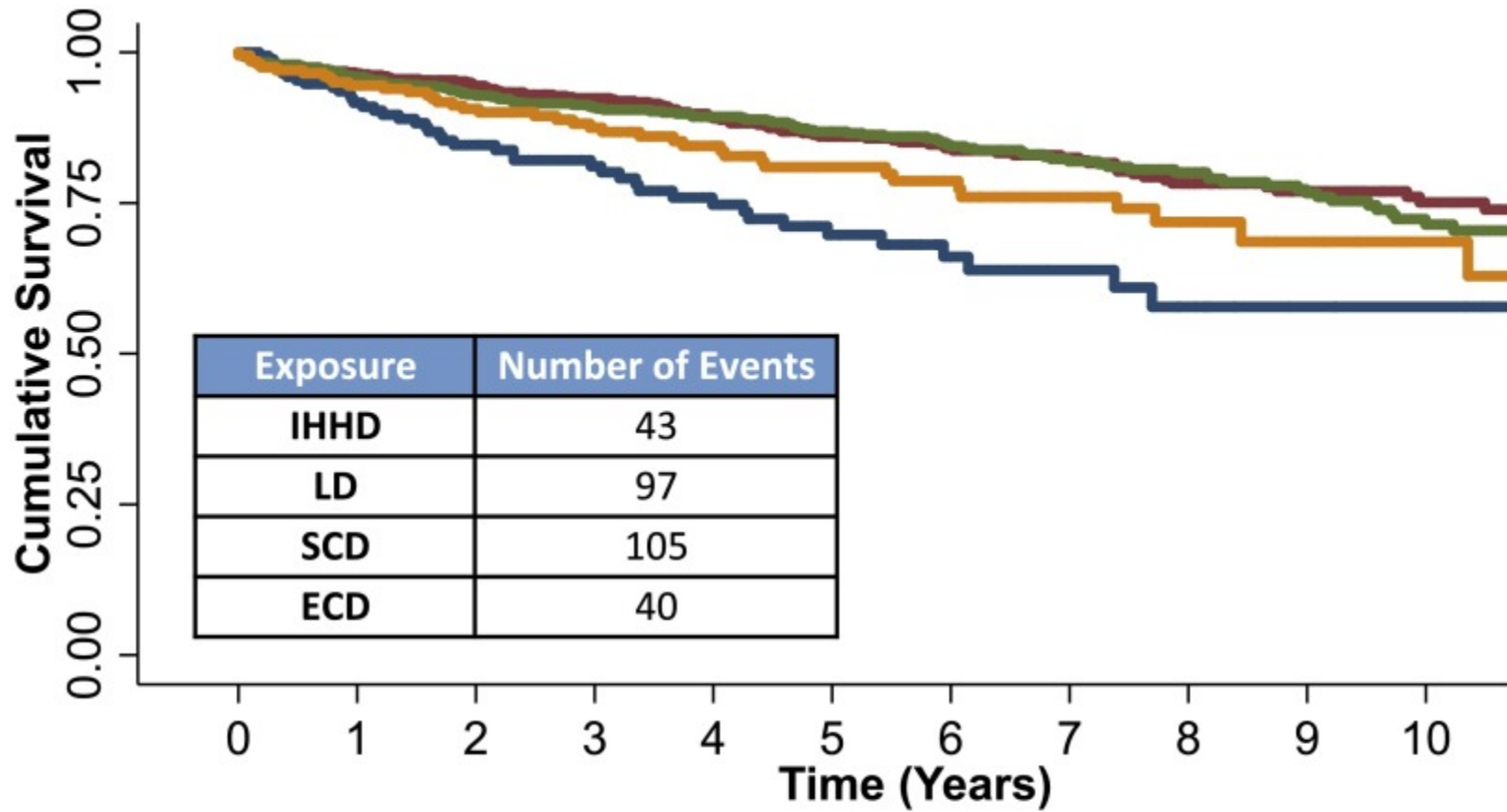


Numbers at risk					
years	0	2	4	6	8
HomeHD	225	203	132	81	37
HospHD	900	587	300	147	44
PD	900	690	390	208	61
SatHD	450	258	115	43	8



**FIGURE 2:** Patient and home dialysis technique survival. Survival from start of HHD (PD + HHD cohort) or time of ...





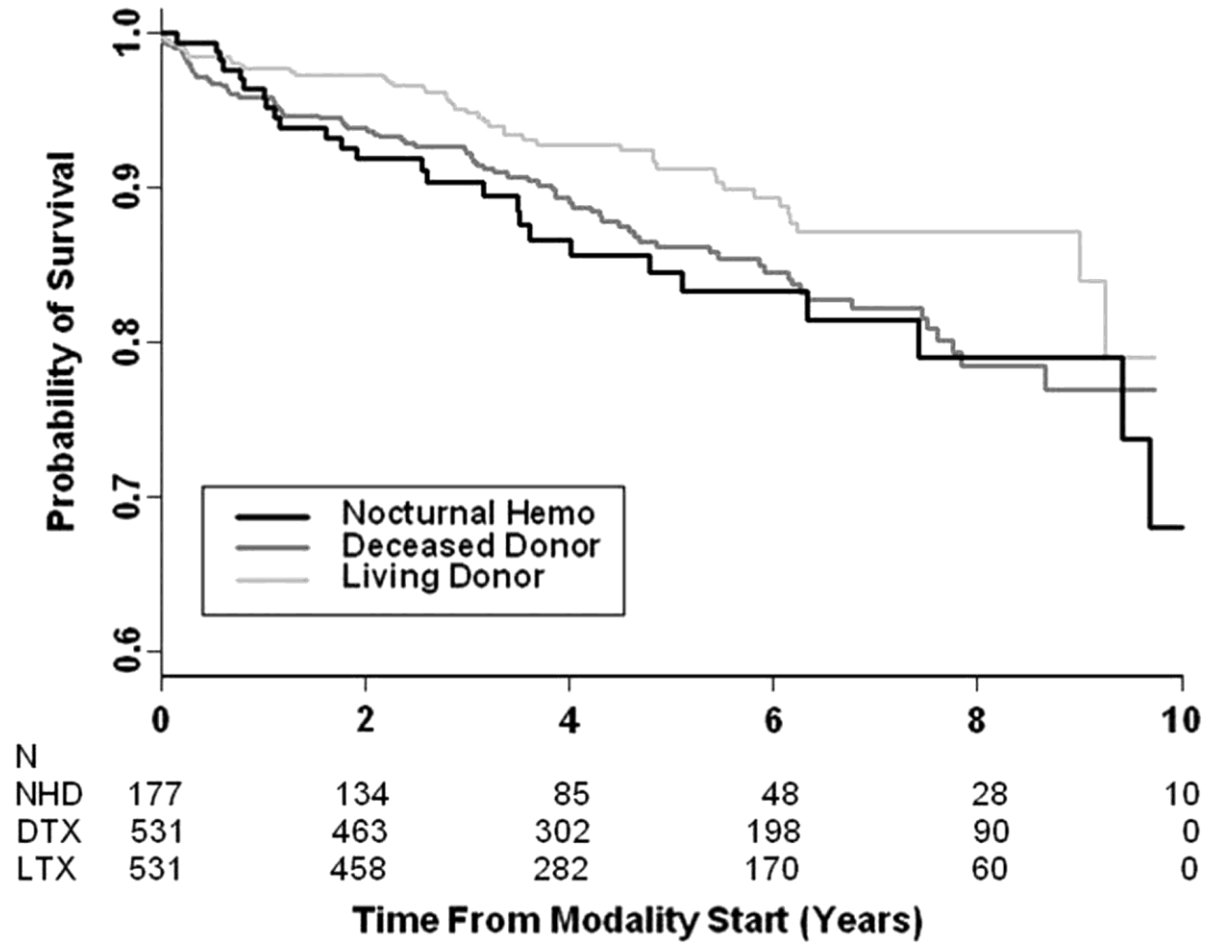
### Number at risk

IHHD	173	144	107	82	64	48	30	23	16	10	8
LD	673	598	520	439	350	291	242	192	148	110	77
SCD	642	590	508	441	384	325	262	206	160	123	80
ECD	202	179	160	126	101	77	61	45	30	19	14

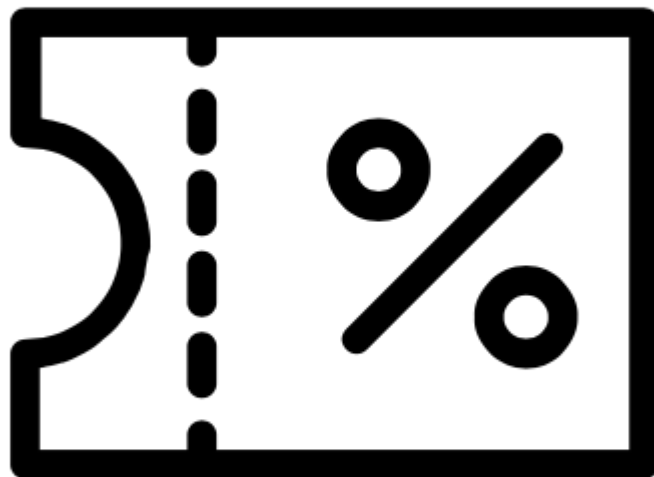




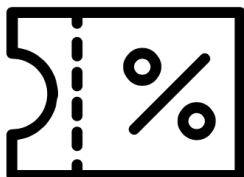
**Fig. 2.** Kaplan–Meier curves for survival of NHD patients compared with standard criteria deceased donor and living ...







**Goedkoper**

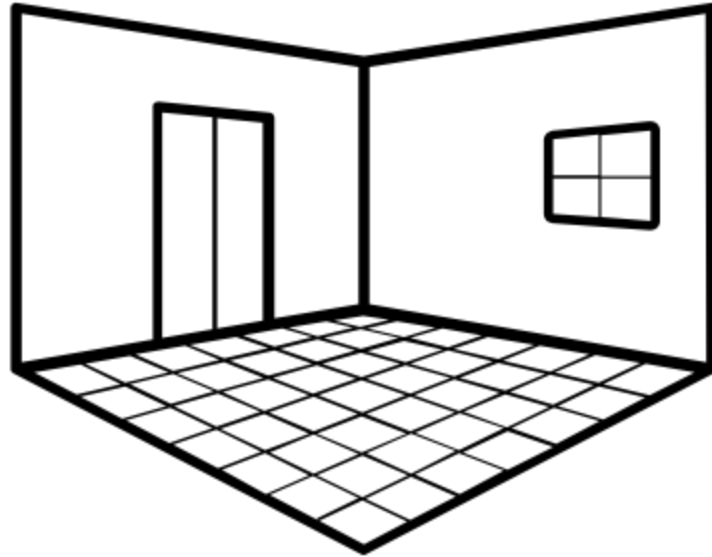


**Table 1.** Annual costs (£) per patient of identifiable elements contributing to the total costs of providing different modalities of dialysis

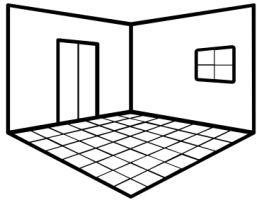
	Haemodialysis (main unit)		Haemodialysis (satellite unit)		APD		CAPD	
	Cost	Percentage of total	Cost	Percentage of total	Cost	Percentage of total	Cost	Percentage of total
Direct nursing	£7 969	22.8%	£7 071	21.6%	£371	1.7%	£357	2.3%
Other nursing activities	£2 132	6.1%	£1 905	5.8%	£1 995	9.2%	£1 995	12.8%
Disposables	£10 952	31.3%	£10 952	33.5%	£14 152	65.4%	£9 772	62.8%
Medical supervision	£1 117	3.2%	£1 026	3.1%	£901	4.2%	£901	5.8%
Dialysis machines	£720	2.1%	£720	2.2%	£924	4.3%	–	0.0%
Machine maintenance	£766	2.2%	£583	1.8%	£766	3.5%	–	0.0%
Anaemia therapy	£3 740	10.7%	£3 328	10.2%	£2 140	9.9%	£2 140	13.7%
Hospital transport	£2 438	7.0%	£1 905	5.8%	£114	0.5%	£114	0.7%
Overheads	£5 188	14.8%	£5 179	15.9%	£290	1.3%	£290	1.9%
Total	£35 023	100.0%	£32 669	100.0%	£21 655	100.0%	£15 570	100.0%

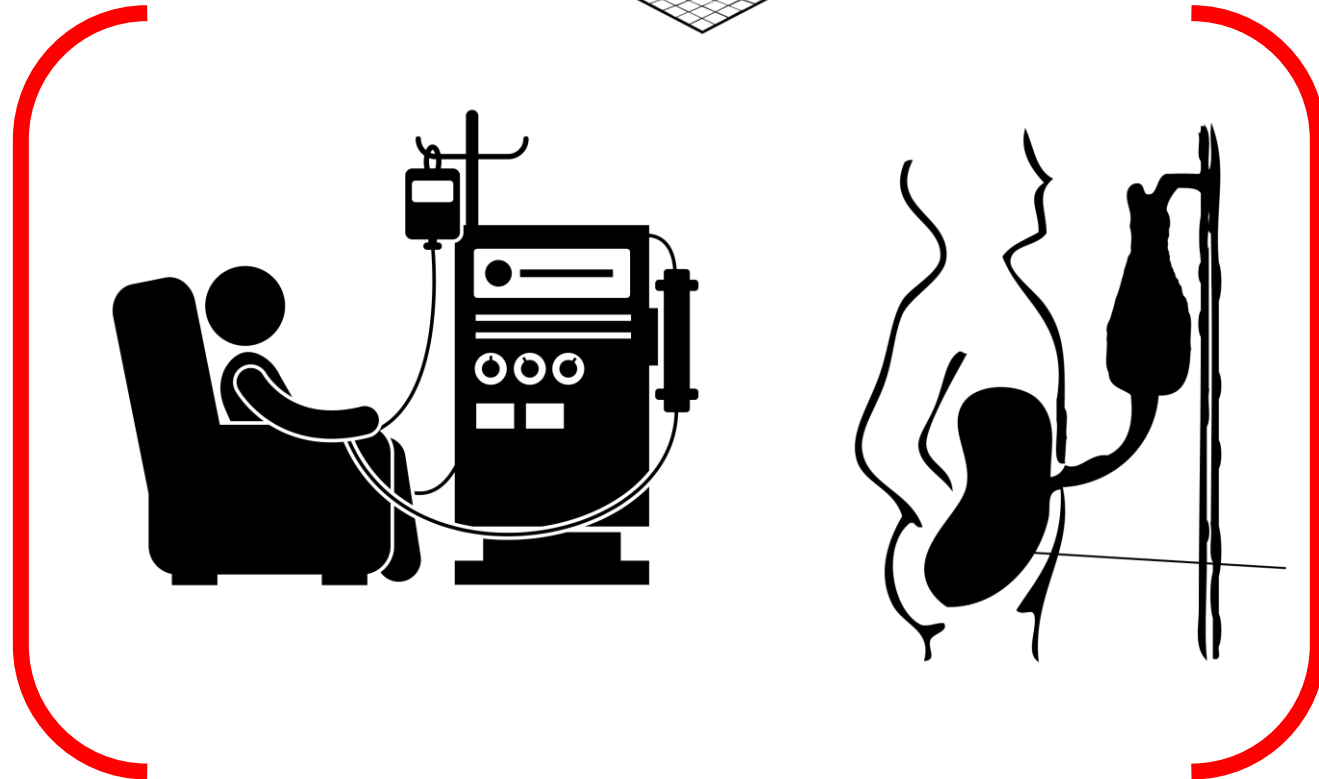
The costs of dialysis machines and machine maintenance are likely to be included in *disposables and solutions* costs for APD patients and for some HD patients.

APD: automated peritoneal dialysis; CAPD: continuous ambulatory peritoneal dialysis.



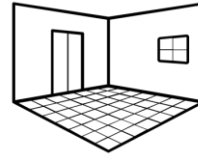
**Ruimte nodig**



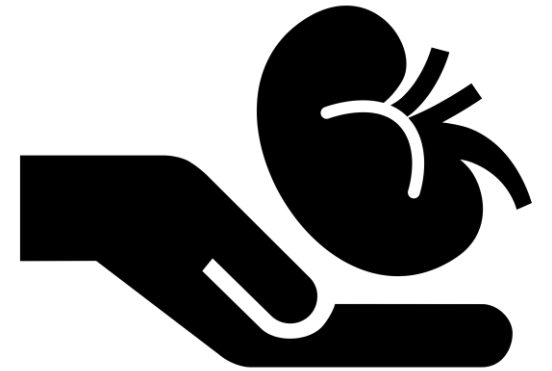
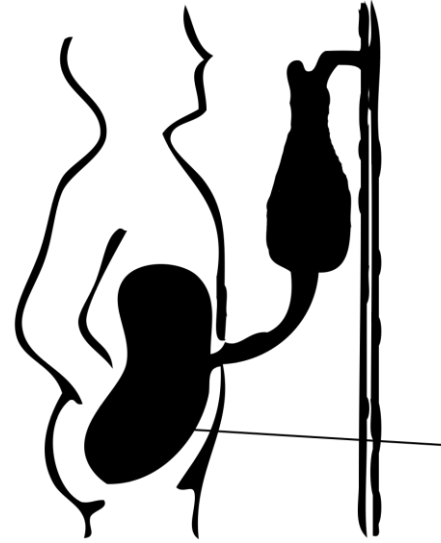


31

4707



359

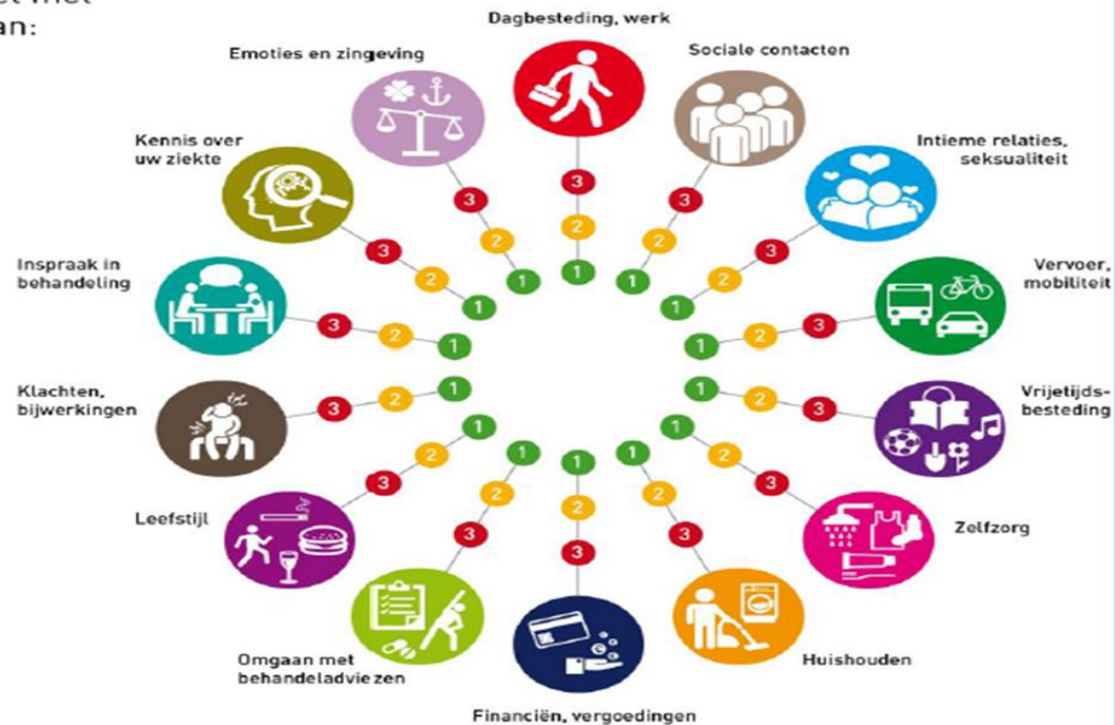


8 % → 25 % ?

Wilt u aangeven hoe het met u gaat op het gebied van:

Uw antwoord kunt u aangeven door aan te kruisen:

- 1 = goed
- 2 = niet goed, maar ook niet slecht
- 3 = niet goed



Erasmus MC  
Erasmus Universiteit Rotterdam

HOGESCHOOL  
ROTTERDAM Kenniscentrum  
Zorginnovatie

ZonMw